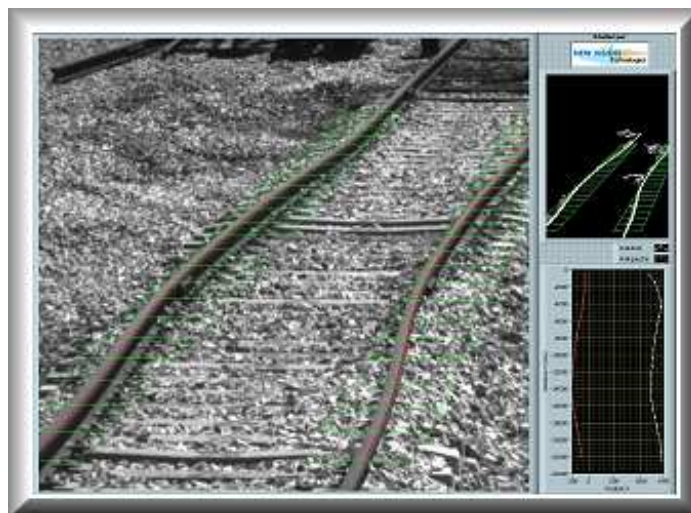




Track position monitoring

For optimal availability for your equipment



Functions and principles of control

- ✦ Area scan camera : ⇨ Image of 2 rails for on-board treatment
- ✦ WIFI router : ⇨ Communication between survey devices
- ✦ GSM Modem : ⇨ Alarms or profiles communication
- ✦ Luminous target : ⇨ Calibration of the monitoring zone

Conditions of measurement

Temperature : from 0 to 50°C

Humidity : from 20 to 80% no condensation

Lighting conditions : from sunrise to sunset by clear weather

Environmental features

	<i>Base de mesure</i>	<i>Pas d'échantillonnage</i>
Field survey	Distance from 14 meters to 45 meters Width of zone from 2.5 meters to 6 meters	1000 mm
Rail position	Resolution +/-4mm	-
Campaign duration	Several months	From 1 to 15 minutes

